

FEDERAL BUREAU OF INVESTIGATION
CHICAGO DIVISION

Threat Deterrence \ Site Planning

2022 Illinois Public Works Mutual Aid Network Conference

October 26, 2022

Jamil Bou-Saab, P.E.



Chicago Division FBI Building Project in collaboration with TERRA Engineering.

Wintrust Arena Project in collaboration with TERRA Engineering
Chicago, IL



Site Design / Integration



AT A GLANCE

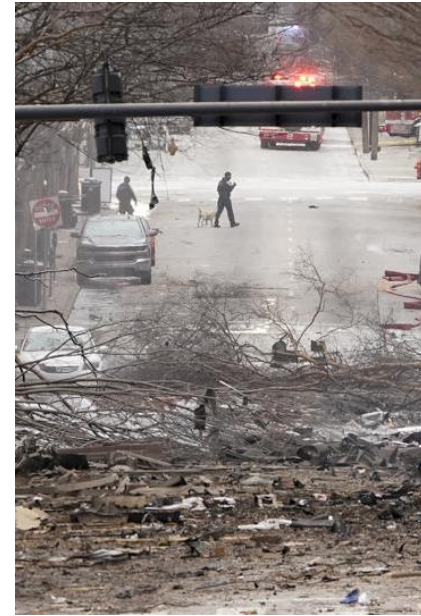
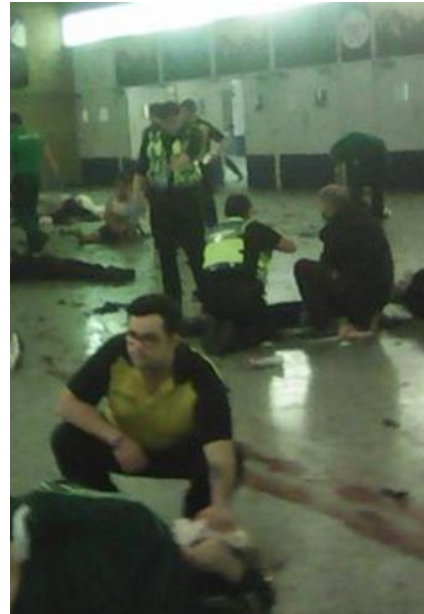
1. SITE CONCERNS
2. SITE PLANNING PRINCIPLES
3. LAYERS OF DETERRENCE
4. SITE FEATURES / ELEMENTS FOR DETERRENCE
5. STANDARDS



SITE CONCERNS

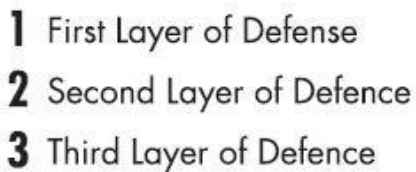
- Attacks will Happen, But what are Consequences?
- One officer killed and one injured
- Barrier protection prevented attacker from getting to the Capital

SITE CONCERNS

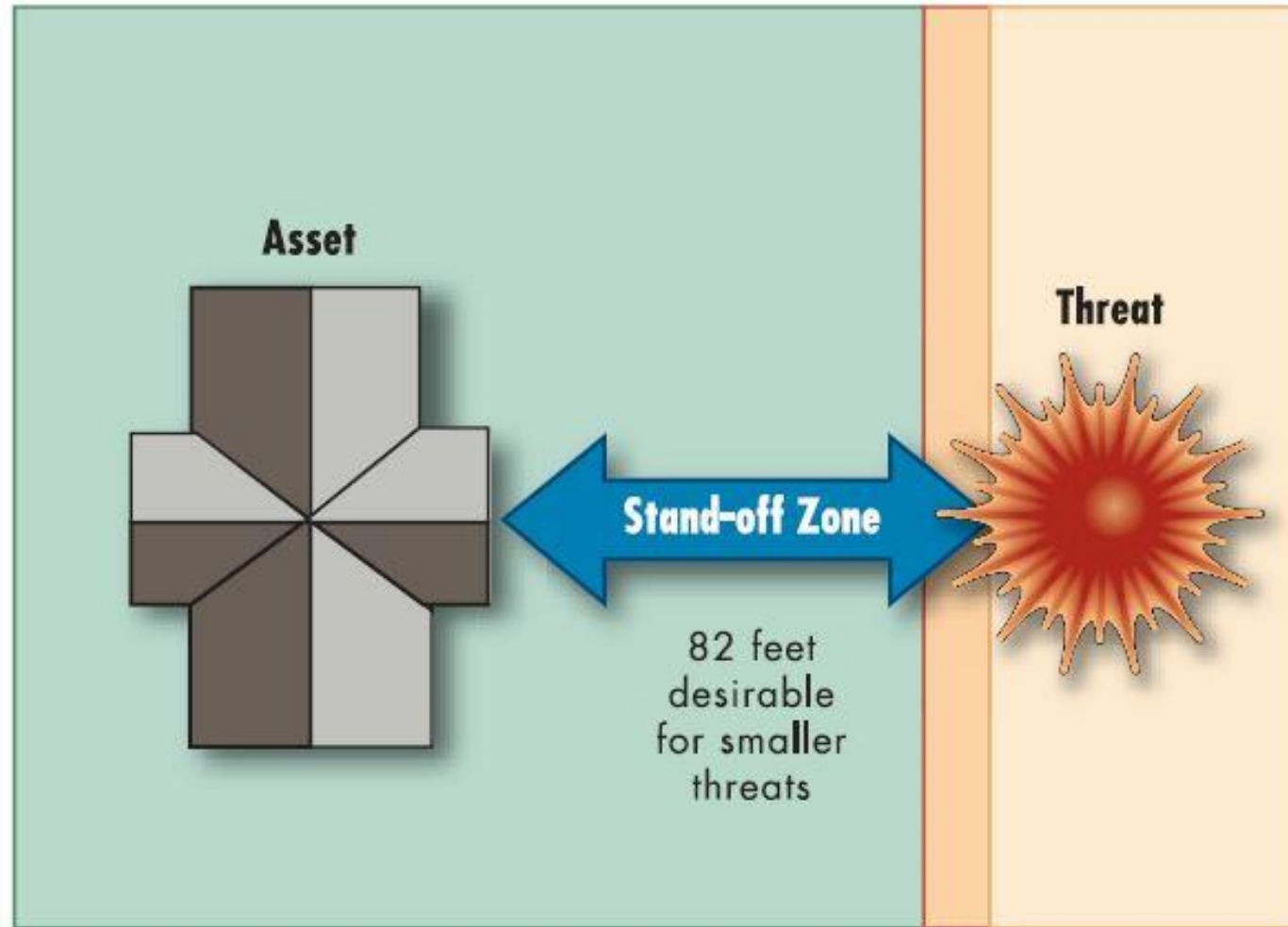


SITE PLANNING





STAND OFF ZONE



In urban areas, standoff distance is generally impossible to achieve; sidewalks provide less than 10 feet

Figure 3-4: Recommended stand-off compared with sidewalks in urban areas.

SOURCE: LEFT, FEMA 426

Rendering of the Smithsonian Air and Space Museum, Washington D.C.



EXAMPLE 1

EXAMPLE 2



Perinton Public Works Building, Perinton, NY

Site Planning Strategies

CPTED SITE FEATURES

1. Lighting

2. Open Sightlines
3. Provide Natural Policing & Surveillance
4. Crime and Plant Selection
5. Vehicle and Pedestrian Circulation
6. Vandal Proof Materials
7. Restricted Access



EXAMPLE 1



Wintrust Arena Project in collaboration with TERRA Engineering

EXAMPLE 2





Federal Plaza, Chicago, Illinois

SITE FEATURES

1. Lighting

2. Open Sightlines

- 3. Provide Natural Policing & Surveillance
- 4. Crime and Plant Selection
- 5. Vehicle and Pedestrian Circulation
- 6. Vandal Proof Materials
- 7. Restricted Access

EXAMPLES



Site Planning Strategies

1. Lighting
2. Open Sightlines

3. Provide Natural Policing & Surveillance

4. Crime and Plant Selection
5. Vehicle and Pedestrian Circulation
6. Vandal Proof Materials
7. Restricted Access



EXAMPLES





SITE FEATURES

1. Lighting
2. Open Sightlines
3. Provide Natural Policing & Surveillance

4. Crime and Plant Selection

5. Vehicle and Pedestrian Circulation
6. Vandal Proof Materials
7. Restricted Access



Federal Building, Washington D.C.

EXAMPLE 1



EXAMPLE 2



SITE FEATURES

1. Lighting
2. Open Sightlines
3. Provide Natural Policing & Surveillance
4. Crime and Plant Selection

5. Vehicle and Pedestrian Circulation

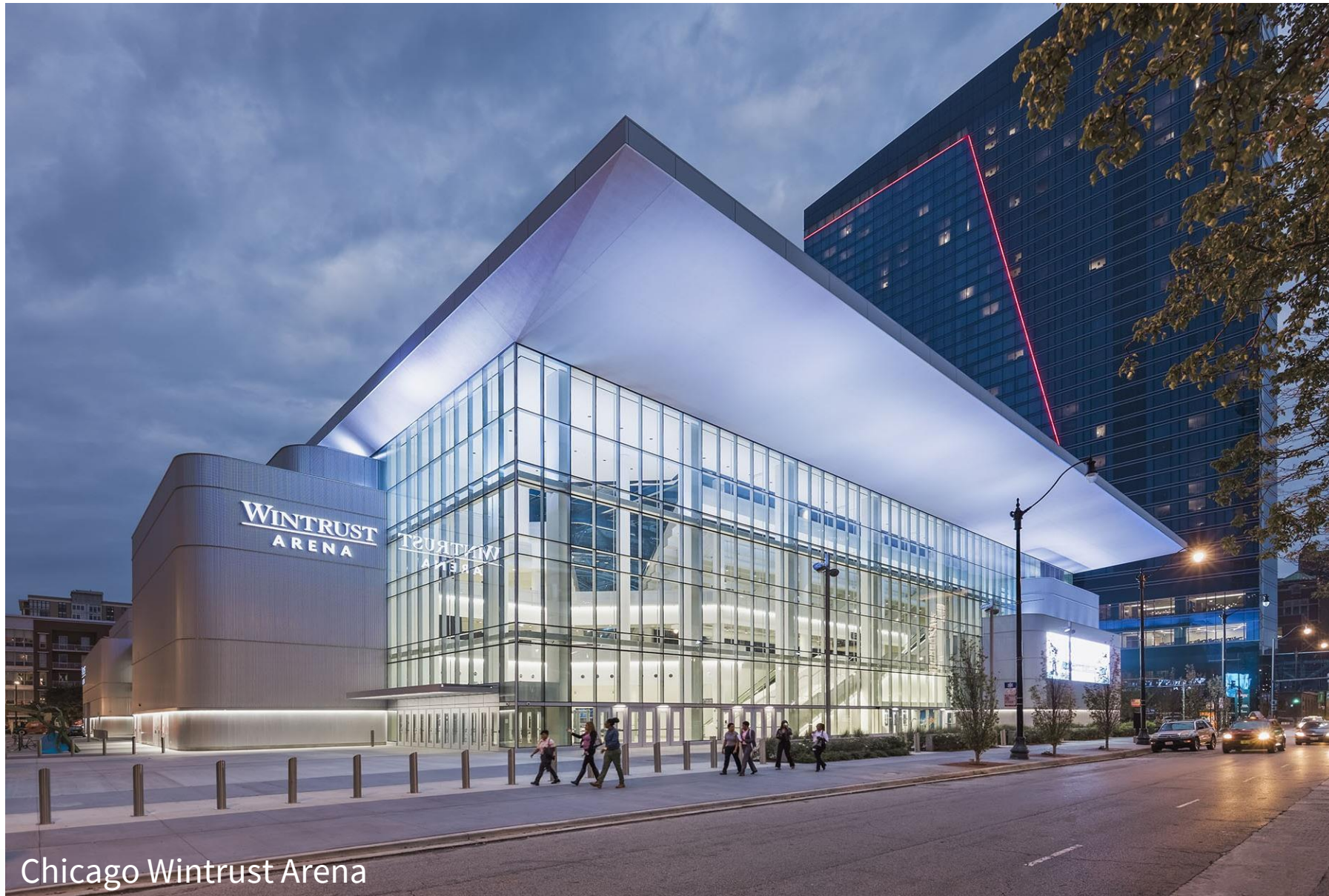
6. Vandal Proof Materials
7. Restricted Access

EXAMPLE 1



Federal Plaza, Chicago, IL

EXAMPLE 2



Chicago Wintrust Arena



National Musuem of the American Indian;
New York City, NY

SITE FEATURES

1. Lighting
2. Open Sightlines
3. Provide Natural Policing & Surveillance
4. Crime and Plant Selection.
5. Vehicle and Pedestrian Circulation

6. Vandal Proof Materials

7. Restricted Access

EXAMPLE 1



Figure 6-13:

A typical raised low planter (left) may be too low to present a significant barrier to vehicles. The high stepped yard (right), which runs along the side of the building, is a significant barrier and could also act as a blast deflector from a curbside vehicle.



Minneapolis Courthouse Plaza, Minneapolis, Minnesota

Figure 6-21:
Minneapolis
Courthouse plaza
with planted berms,
representing historic
Minnesota "drumlins."
They also act as
barriers to a vehicular
attack, as a second
layer of defense,
creating stand-off.

SOURCE: COURTESY OF
MARTHA SCHWARTZ, INC.

EXAMPLE 2



SITE FEATURES

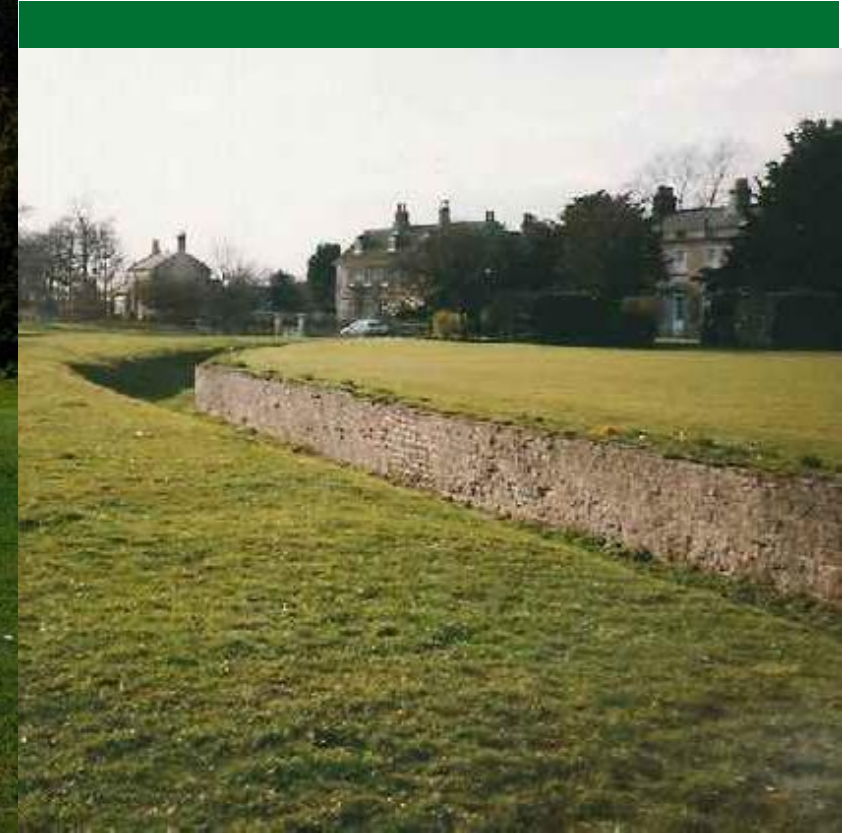
1. Lighting
2. Open Sightlines
3. Provide Natural Policing & Surveillance
4. Crime and Plant Selection
5. Vehicle and Pedestrian Circulation
6. Vandal Proof Materials

7.Restricted Access



EXAMPLE 1

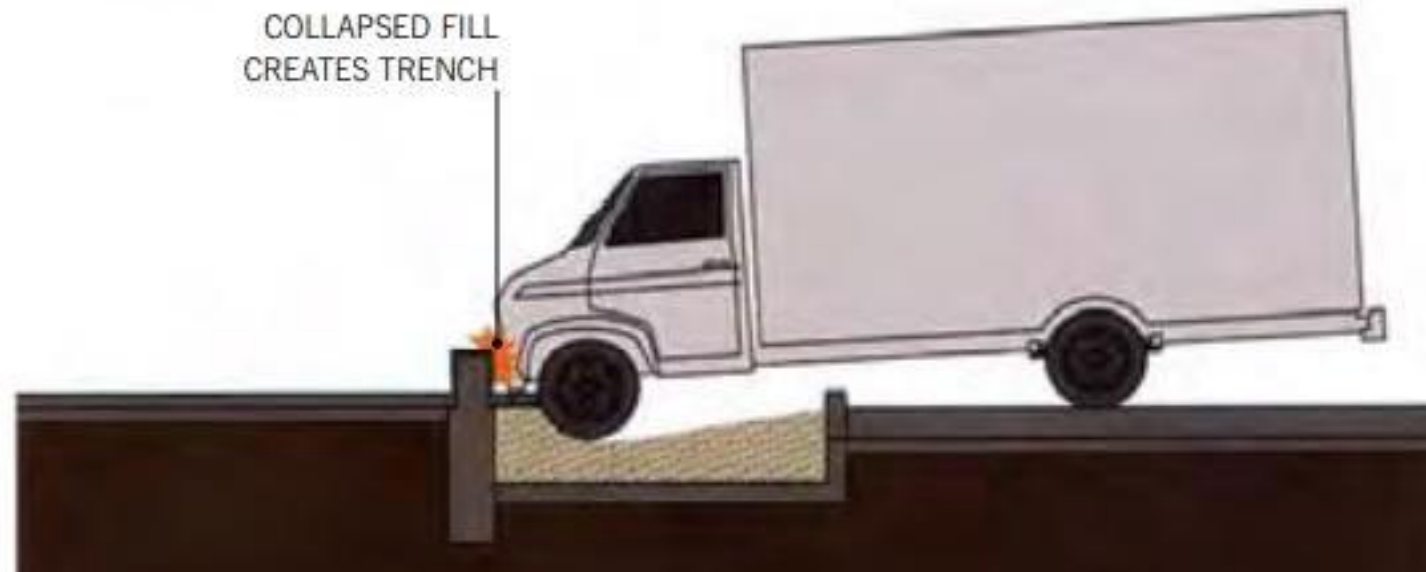
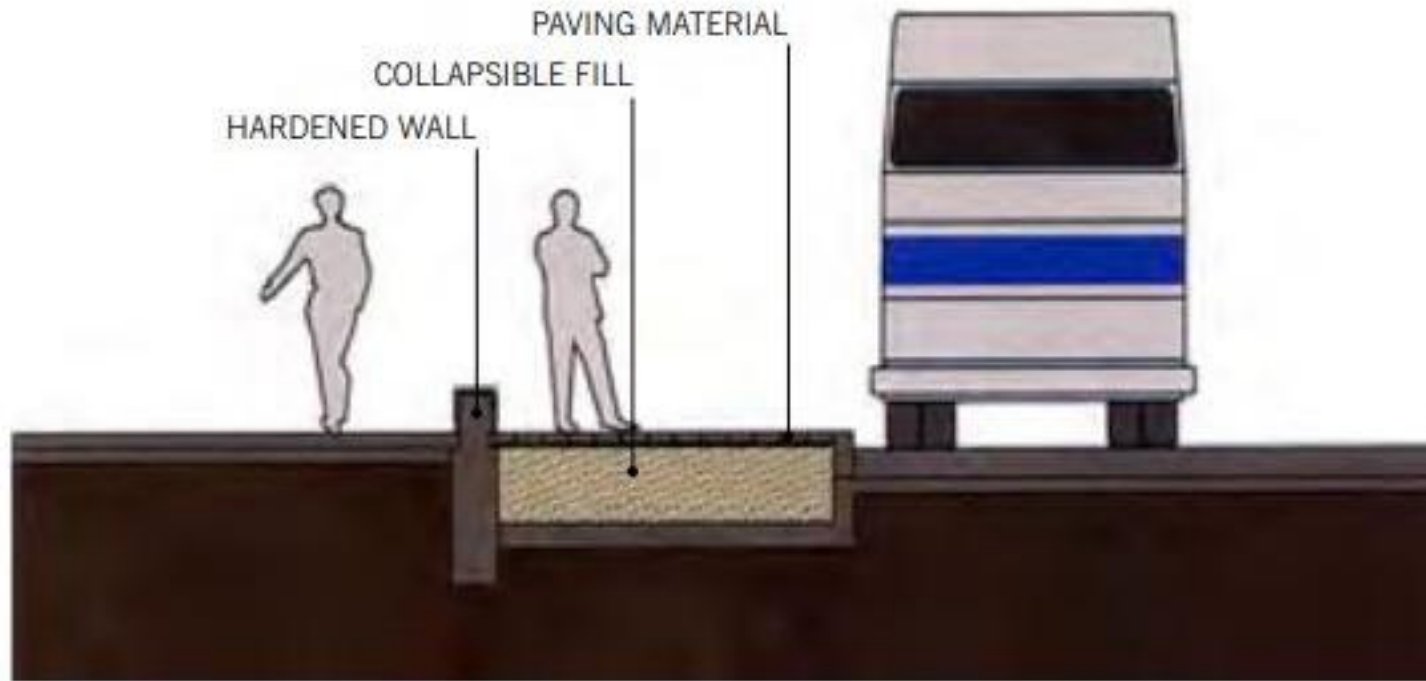
EXAMPLE 2



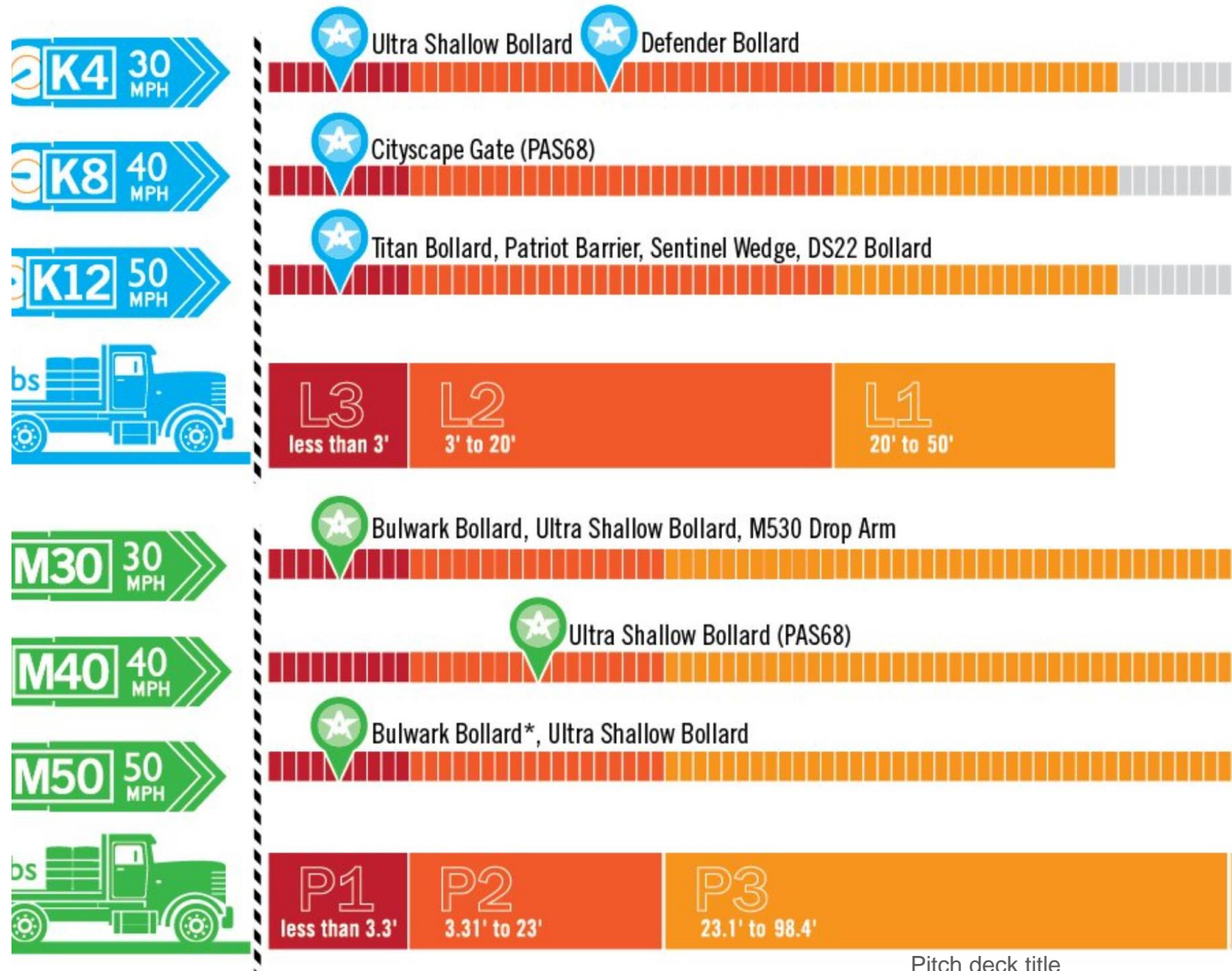
EXAMPLE 3



EXAMPLE 4



CRASH STANDARDS



SUMMARY: SITE PLANNING STANDARDS



- Set back from street to observe approaches,
- Elevation changes to deter vehicles,
- Walkways set away from the building,
- Non-obstructing plants to block views,
- Large planters double as blockades,
- Parking well away from building, and
- Lighting coordinated w/closed circuit surveillance.

SUMMARY: SITE PLANNING STANDARDS



Washington Monument, Washington D.C.

- No long straight roads to pick up speed,
- Control entries and amount of access,
- No signs on critical asset buildings,
- No Parking in the Stand off Zone,
- Illuminate building exteriors,
- Waste receptacles away from buildings.

ANY QUESTIONS?