



McDonough County
Emergency Service
& Disaster Agency

Integration of Public Works and Emergency Management.

Katie Colon Beesley

IPWMAN 2021



About me

Katie Beesley

- Planner at McDonough County ESDA (McESDA)
 - Staff Development Training Specialist (soon!)
 - Resource Unit Leader
 - M.S. in Health Sciences at WIU
 - Returned Peace Corps Volunteer
 - Major Nerd
-

Goals for today

- Better prepare our experts
- Familiarize you with EM jargon
- Give you best practices to improve your emergency preparedness



Thank You!



Community Lifelines

PRIORITY: Life Saving




EFFORT: Stabilization of Lifelines



A lifeline enables the continuous operation of **government functions** and **critical business** and is essential to **human health** and **safety** or **economic security**.

Public works is the combination of physical assets, management practices, policies, and personnel necessary for government to provide and sustain structures and services essential to the welfare and acceptable quality of life for its citizens.

The top right corner of the slide features a decorative arrangement of overlapping triangles in various shades of blue, including dark blue, medium blue, and light blue.

Pop Quiz: Who is the 9th person
in line for the Presidency?

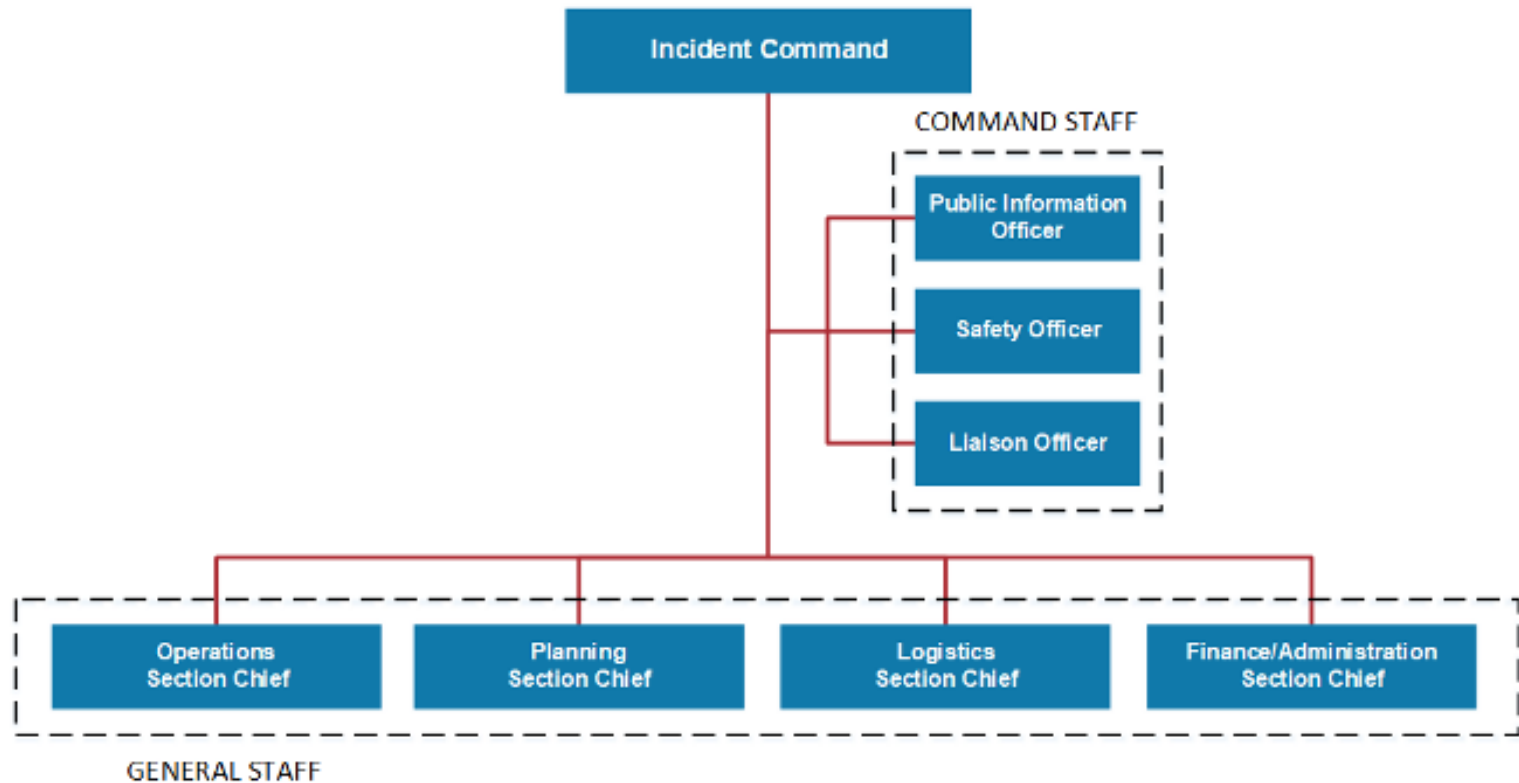
Answer: Secretary of Agriculture Tom Vilsack



Continuity of Operations (COOP)

- Also called Continuity of Government (COG) or business continuity
- Our EM jargon for “Backup”
- Planning “Three Deep”
 - “Back up for your backup”
- Thorough Cross-Training of your “B Team”
 - Include practice opportunities
 - Job Action Sheets help in a pinch
- Applies to equipment and processes as well!





Incident Command System (ICS)

Tips for ICS Preparedness

- Practice by integrating ICS into Day-to-Day functions
- Practice the forms
- Training/Certification
 - Basics: ICS 100, 200, 700 & 800
 - Advanced: ICS 300 & 400
 - Public Works specific:
 - IS 552: Public Works Role in Emergency Management
 - IS 554: Emergency Planning for Public Works
 - IS 556: Damage Assessment for Public Works
 - IS 558: Public Works and Disaster Recovery.



Check out training.fema.gov for certifications!

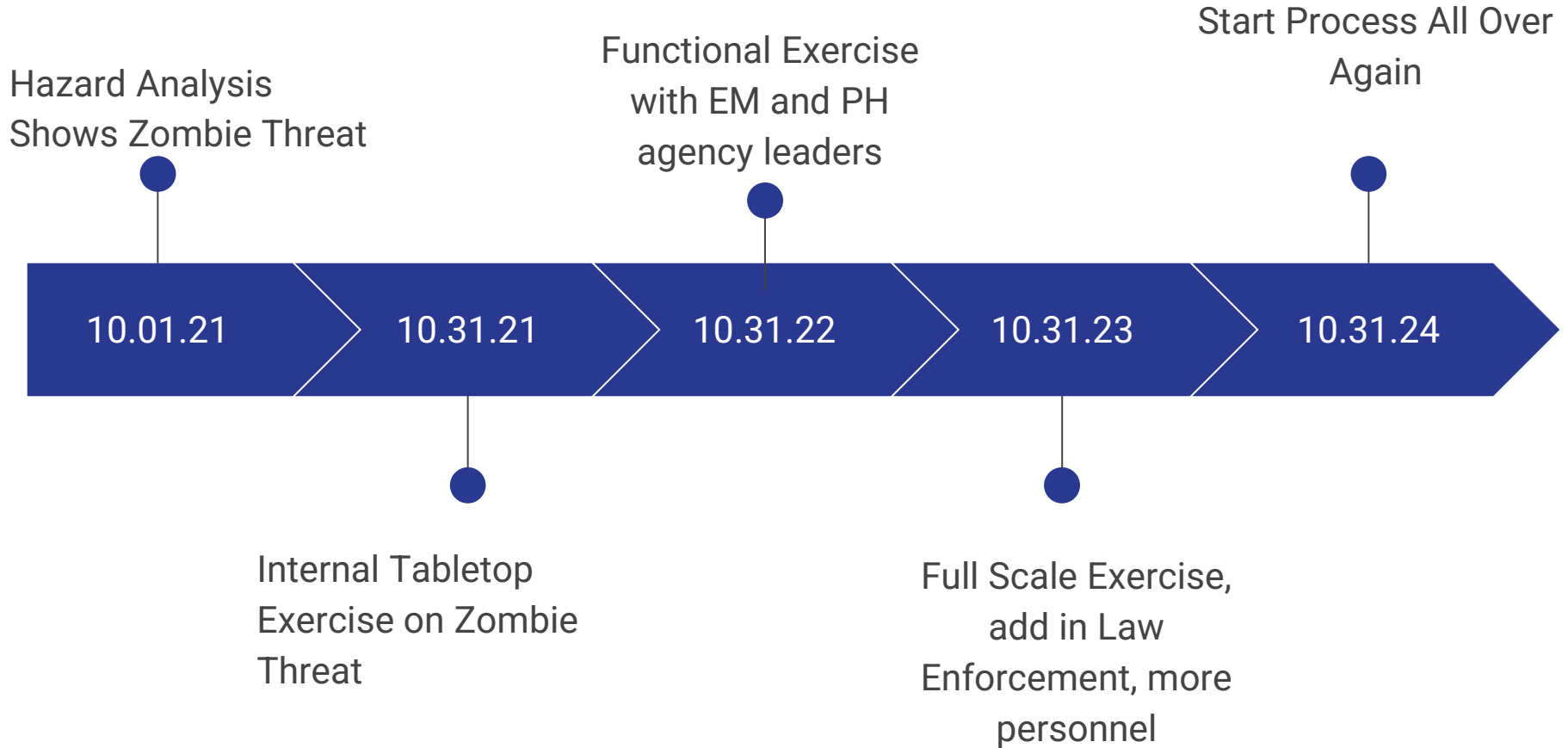
Exercises

- Useful for practice and plan improvement
- Discussion Based: Like Dungeons and Dragons
 - Tabletop Exercise
 - Talk out the scenario
 - Pros: Cheap, great for “big picture”
 - Cons: Does not measure performance
- Operations Based: Like LARP
 - Real Hands-On Experience
 - Functional- Narrow Focused
 - Full-Scale- As Close to Real Deal as Possible
 - Pros: Thorough
 - Cons: Lots of Effort and Resources



Check out training.fema.gov for certifications!

Exercises- The Schedule



Exercises, Cont.

- Try both internal exercises and partnerships with EM
- Variety of Participants= More Perspectives!
- Be realistic with scenarios
 - New Orleans Example
- Find ways to make it engaging
 - Unique injects
 - Randomization
 - Game style activities



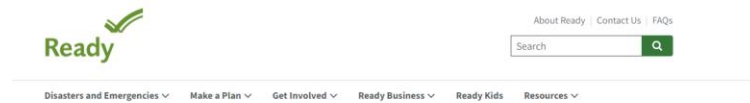
After Action Review (AAR)

- Get everyone's reactions and feedback documented
- What worked, what didn't work, improvement plan for future
- Constructive feedback is solution-oriented
- Error on the side of open and honest



Resources

- Ready.gov
 - Includes a business tab with software for planning COOP
- EPA's Community-Based Water Resiliency Tool (CBWR)
- Publicpower.org
 - Best Practices and all-hazards guidebooks



Business Continuity Planning Suite



If you need more help getting a business or organization prepared, please use the new [Business Continuity Planning Suite](#) (ZIP Archive - 13 Mb; PC Compatible) developed by DHS' National Protection Directorate and FEMA.

This software was created for any business with the need to create, improve, or update its continuity plan. The Suite is scalable for optimal use by organizations of any size and can include BCP training, automated BCP and disaster recovery plan (DRP) generation, directed exercise for testing an implemented BCP. Businesses can utilize this solution to test operations and provide resilience during a disruption.



All-Hazards GUIDEBOOK

A Guide to Developing All-Hazards Emergency Plans and Preparedness Programs
for The Nation's Public Power Systems

Thank You!



Contacts Information

Email: ka-colon@wiu.edu

Or

mcesda@macomb.com

Phone: (573) 415-7745